



For details, refer to the Operating Instructions.
詳細資訊，請參閱使用說明書。

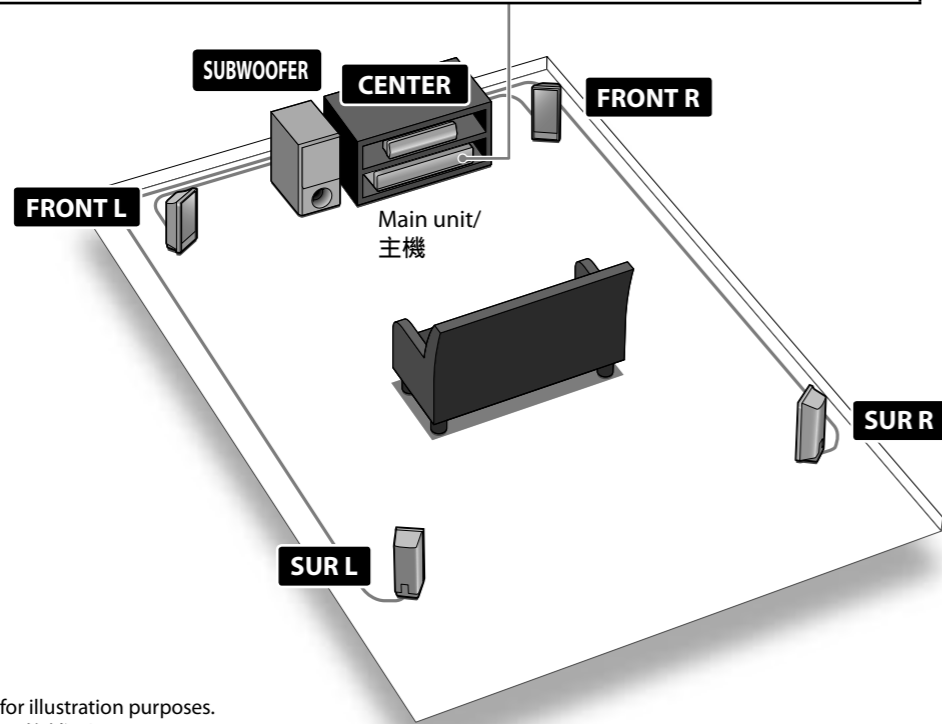
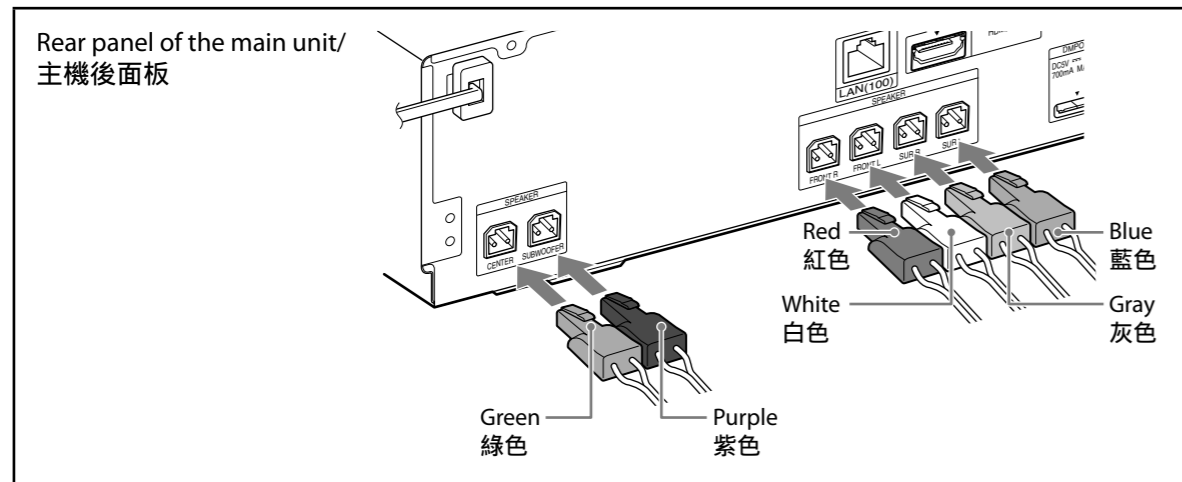
Speaker and TV Connections/揚聲器和電視機連接

BDV-E300/E301/E801

©2009 Sony Corporation Printed in Malaysia

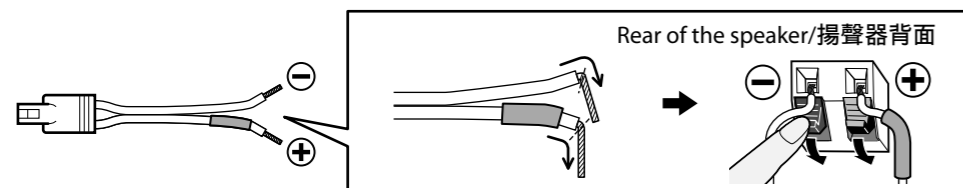
Connect the speakers/連接揚聲器

Connect the speaker cords to match the color of the SPEAKER jacks of the unit.
將揚聲器導線連接到本機上對應顏色的SPEAKER插孔。



BDV-E300 is the model used for illustration purposes.
BDV-E300 是用於圖示說明的機型。

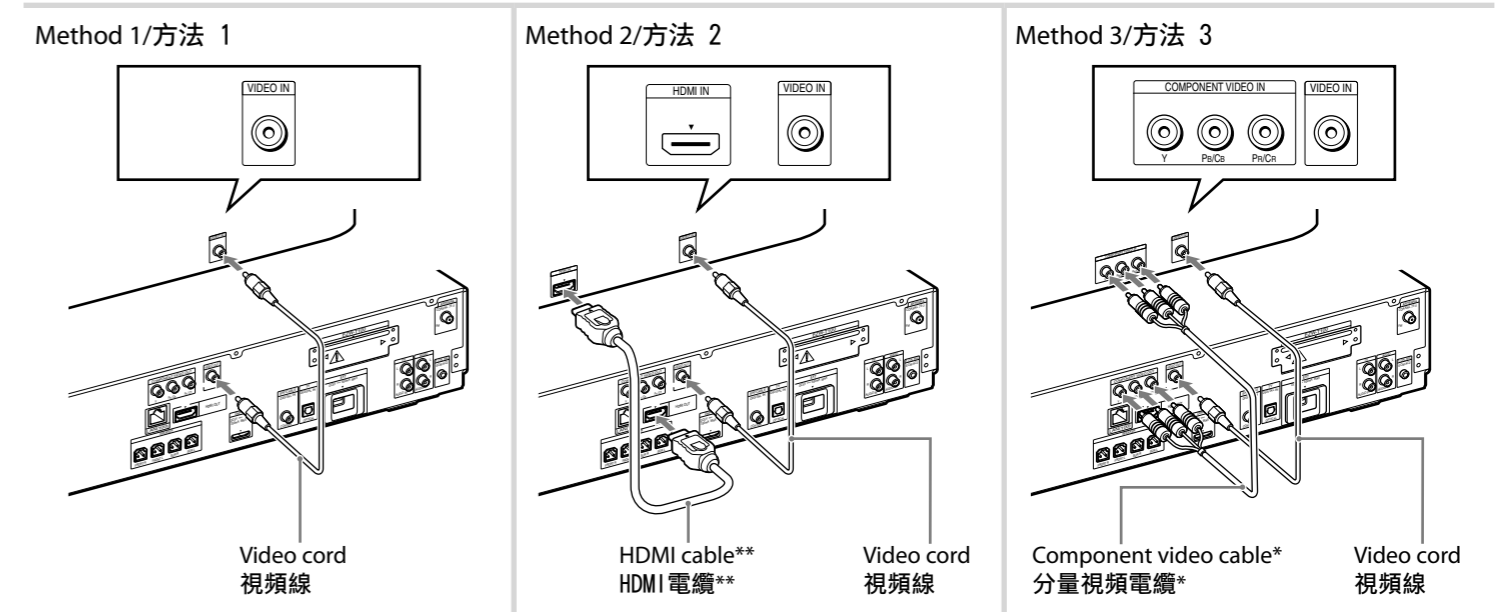
To connect speaker cords to the speaker/將揚聲器導線連接到揚聲器



Connect your TV/連接電視機

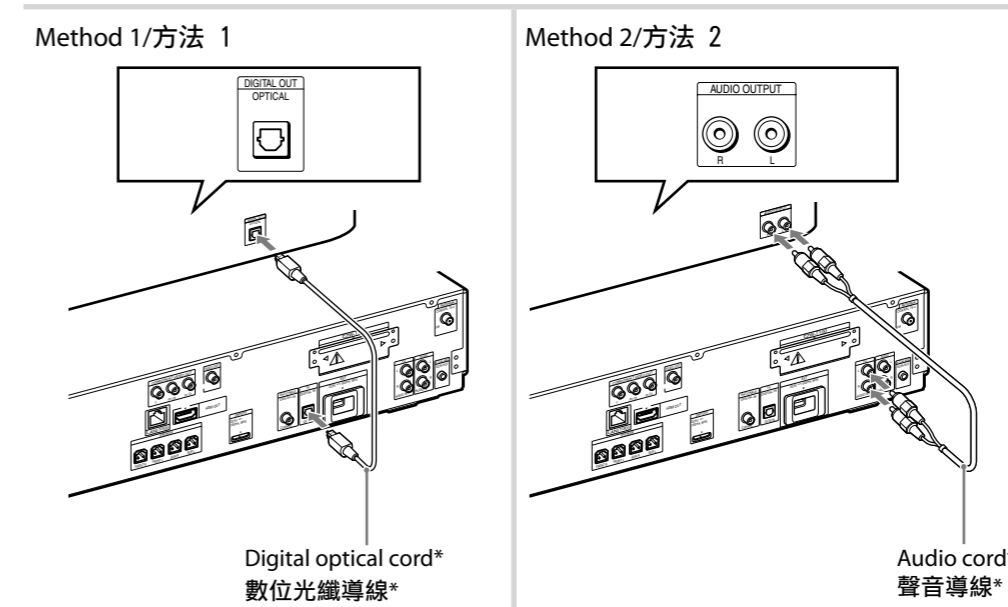
Depending on the jacks on your TV, select the video and audio connection method.
視電視機上的插孔而定，選擇視頻和聲音的連接方法。

Video connection method/視頻連接方法



*Not supplied/不提供
**Supplied with Singapore, Indonesian, Malaysian, Hong Kong, Filipino, Taiwan, Mexican, and Latin American models only.
**僅隨新加坡、印尼、馬來西亞、香港、菲律賓、台灣、墨西哥和拉丁美洲機型提供。

Audio connection method/聲音連接方法



*Not supplied/不提供

After connecting the speakers and TV
連接揚聲器和電視機後

Connect the AC power cords (①), and turn on the power (②). "Easy Setup" begins after startup.
連接交流電源線(①)，然後打開電源(②)。啟動後“簡易設置”開始。