

## 无线扬声器

快速入门指南 CS

Quick Start Guide GB

SRS-BTV5



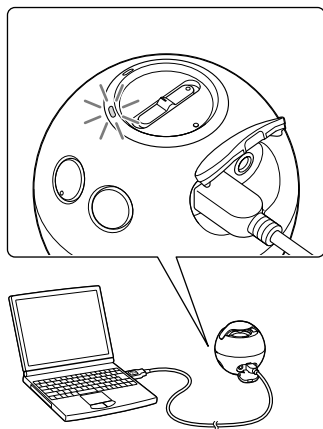
\* 4 4 3 7 4 3 8 8 2 \* (1)

© 2012 索尼公司 Sony Corporation  
中国印刷 Printed in China

## 给本机充电

当本机与电脑连接时，充电开始。充电最长3小时完成，指示灯（橙色）自动熄灭。

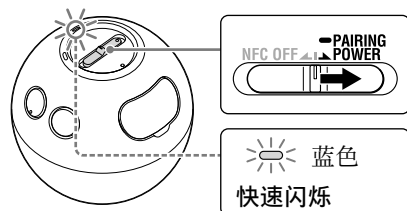
充电中，BATT/CHG指示灯亮橙色。



## 与Bluetooth设备配对和连接

配对之前，给本机充电。

- 1 将Bluetooth设备放在离本机1米之内。
- 2 滑动POWER开关开启本机电源。  
本机在默认设定中自动进入配对模式。



在配对模式中，蓝色指示灯快速闪烁。要在下次使用本机时进入配对模式，在本机关机时滑动并保持开关到PAIRING侧约2秒。

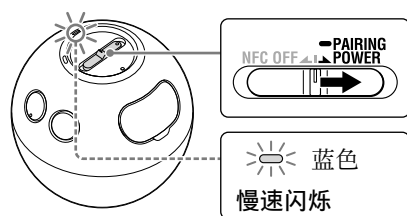
- 3 在Bluetooth设备上执行配对过程以侦测本机。

当在Bluetooth设备的显示屏上出现侦测到的设备的清单时，选择“SRS-BTV5”。如果在Bluetooth设备的显示屏上要求输入密码，输入“0000”。

- 4 从Bluetooth设备进行Bluetooth连接。

## 与配对的设备连接

- 1 开启本机电源。



- 2 从Bluetooth设备进行Bluetooth连接。

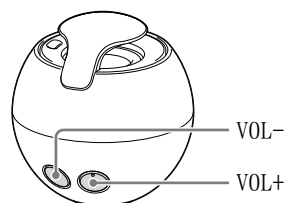
## 听音乐和打电话

在与Bluetooth设备进行Bluetooth连接之后操作本机。

## 听音乐

配置：A2DP, AVRCP

在Bluetooth设备上启动播放。



VOL+按钮有一个触点。

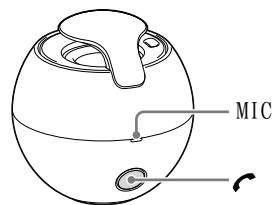
## 打电话/接电话

配置：HSP, HFP

操作您的手机以拨打电话。

要结束通话，按本机上的MIC按钮。

当有电话打入时，按本机上的MIC按钮。当在您听音乐时有电话打入时，以同样的方式操作。



## 若要关闭本机

- 1 使用智能手机或手机断开Bluetooth连接。
- 2 滑动并按住POWER开关直到④ (Bluetooth) 指示（蓝色）熄灭。

## 用智能手机（NFC）进行一触即连

通过用智能手机接触本机，本机自动开启然后进入到配对和Bluetooth连接。

- 1 下载并安装应用程序“NFC轻松连接”。“NFC轻松连接”是个免费的Android应用程序。通过二维码访问Sony Style网站。搜索“NFC轻松连接”并下载。下载应用程序可能会收费。

通过二维码：  
使用一个二维码读取器应用程序。



## 提示

- 根据智能手机的情况，您可能无需下载“NFC轻松连接”就可通过轻触将本机与您的智能手机相连。在该情况下，操作和说明书可能与此处所述会有不同。更多详情，请参考智能手机附带的手册。

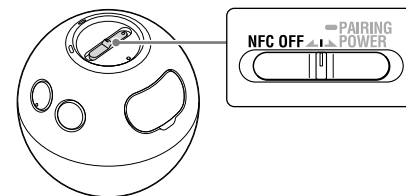
## 兼容的智能手机

- 内置NFC功能的智能手机（操作系统：Android 2.3.3或以上，不包括Android 3.x）

## NFC

NFC (Near Field Communication) 是一项能够在多种设备之间进行短程无线通讯的技术，例如手机和IC标签。因为有了NFC功能，只需接触相关的符号或NFC兼容设备上规定的位置，就可方便地达成数据通讯。

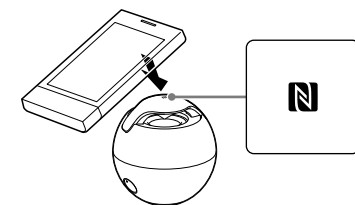
- 2 将本机上开关设到中间位置。



您无需开启本机电源。当您用智能手机接触本机时，本机将开启。

- 3 在智能手机上启动应用程序“NFC轻松连接”。确保应用程序画面显示。

- 4 用智能手机接触本机。先解除智能手机画面的锁定。使智能手机接触本机标记N的部位。保持智能手机接触本机，直到智能手机振动。



按照画面上的指示完成连接。

当④ (Bluetooth) 指示（蓝色）停止闪烁并保持常亮时，本机即与设备连接。要断开本机连接，再次用智能手机接触本机。

您可从智能手机切换声源到另一个NFC兼容的Bluetooth设备。有关详情，请阅读“帮助指南”。

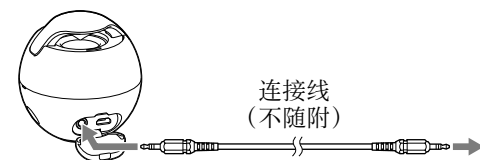
## 提示

如果您不能连接本机，请尝试以下。

- 在智能手机上启动应用程序，然后将智能手机缓慢移到本机的N标记上。
- 如果智能手机装在套子中，请从套子将其取出。

## 通过连接连接线（不随附）来听音乐

您可将本机作为普通有线扬声器系统使用。



如果您连接连接到AUDIO IN插孔，则从连接AUDIO IN插孔的设备的输出具有优先，您将不能从Bluetooth设备听到声音。

- Bluetooth文字标记和标志归Bluetooth SIG, Inc.所有。Sony Corporation对此标记的使用是经过许可的。
- N标记是NFC Forum, Inc.在美国和其他国家的商标或注册商标。
- Android是Google Inc.的商标。
- 所有其他商标和注册商标均属于其各自所有者的商标或注册商标。本说明书中未指定TM和®标记。

## 中文（简体字）

中国大陆地区的用户

## 附带的手册



## 快速入门指南（本文档）

为您提供将本机和Bluetooth设备连接以及基本操作的说明。



## 参考指南

为您提供注意事项以及产品规格。



## 帮助指南

如果您想更详细地了解使用本机的方法，请阅读您电脑或智能手机的帮助指南。帮助指南还包含了故障排除指南，为您提供可能遇到的问题的解决方法。

URL:

<http://rd1.sony.net/help/speaker/srs-btv5/cn/>

二维码:



# SONY

## Wireless Speaker System

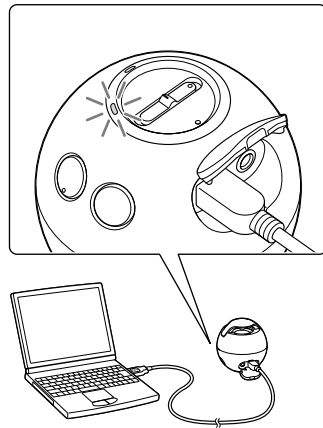
Quick Start Guide

GB

SRS-BTV5



The BATT/CHG indicator is lit in orange during charging.



### English

#### Manuals supplied



##### Quick Start Guide (this document)

Provides you with instructions on how to connect the unit with *Bluetooth* devices and basic operations.



##### Reference Guide

Provides you with precautions and product specifications.



##### Help Guide

Read the Help Guide on your computer or smartphone, when you want to know how to use the unit in greater detail. The Help Guide also contains a troubleshooting guide which provides you with remedies for the problems you might encounter.

URL:

<http://rd1.sony.net/help/speaker/srs-btv5/cn/>

Two-dimensional code:



#### Charging the unit

Charging starts when the unit and the computer are connected. Charging is completed in about 3 hours at most and the indicator (orange) goes off automatically.

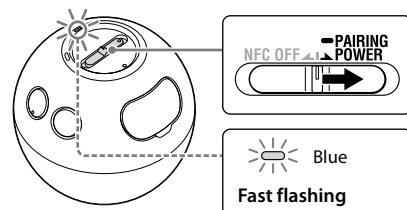
#### Pairing and connecting with the *Bluetooth* device

Before pairing, charge this unit.

**1 Place the *Bluetooth* device within 1 meter of this unit.**

**2 Slide the POWER switch to turn on this unit.**

The unit enters pairing mode automatically in the default setting.



The blue indicator flashes fast in pairing mode. To enter pairing mode the next time you use the unit, slide and hold the switch to the PAIRING side for about **2 seconds** when this unit is turned off.

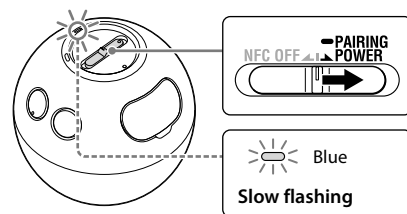
**3 Perform the pairing procedure on the *Bluetooth* device to detect this unit.**

When the list of detected devices appears on the display of the *Bluetooth* device, select "SRS-BTV5." If passkey input is required on the display of a *Bluetooth* device, input "0000."

**4 Make the *Bluetooth* connection from the *Bluetooth* device.**

#### Connecting with the paired device

**1 Turn on the unit.**



**2 Make the *Bluetooth* connection from the *Bluetooth* device.**

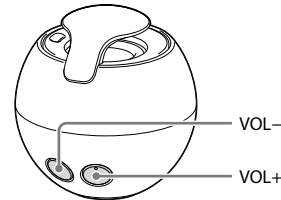
#### Listening and Calling

Operate the unit after making *Bluetooth* connection with your *Bluetooth* device.

#### Listening to music

Profile: A2DP, AVRCP

Start playback on the *Bluetooth* device.



The VOL+ button has a tactile dot.

#### Making a call/Receiving a call

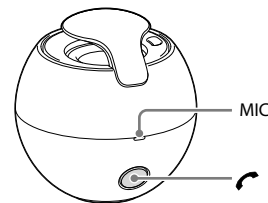
Profile: HSP, HFP

Operate your mobile phone to make a call.

To terminate a call, press the button on the unit.

Press the button on the unit when an incoming call arrives.

Operate in the same way when an incoming call arrives while you are listening to the music.



#### To turn off the unit

**1 Disconnect the *Bluetooth* connection using the smartphone or mobile phone.**

**2 Slide and hold the POWER switch until the (*Bluetooth*) indicator (blue) goes off.**

#### One touch connection with a smartphone (NFC)

By touching the unit with a smartphone, the unit is turned on automatically and then proceeds to pairing and *Bluetooth* connection.

**1 Download and install the app "NFC Easy Connect."**

"NFC Easy Connect" is a free Android app. Access the Sony Style site by using the following two-dimensional code. Search for "NFC Easy Connect" and download it. Fees may be charged for downloading the app.

By the two-dimensional code: Use a two-dimensional code reader app.



#### Hint

Depending on your smartphone, you may not need to download "NFC Easy Connect" to connect the unit with your smartphone by one touch. In that case, the operation and specifications may be different from the description here. For details, refer to the manual supplied with your smartphone.

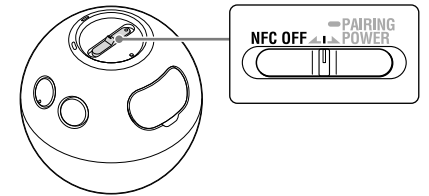
#### Compatible smartphones

Smartphones with the NFC function built-in (OS: Android 2.3.3 or later, excluding Android 3.x)

#### NFC

NFC (Near Field Communication) is a technology enabling short-range wireless communication between various devices, such as mobile phones and IC tags. Thanks to the NFC function, data communication can be achieved easily just by touching the relevant symbol or designated location on NFC compatible devices.

**2 Set the switch to the center on this unit.**



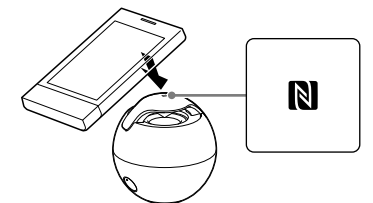
You do not need to turn on the unit. The unit turns on when you touch it with the smartphone.

**3 Start the app "NFC Easy Connect" on the smartphone.**

Make sure that the application screen is displayed.

**4 Touch this unit with the smartphone.**

Unlock the screen of the smartphone beforehand. Touch the smartphone on the N marked part of this unit. Keep touching the unit with the smartphone until the smartphone vibrates.



Complete the connection by following the instructions on the screen.

When the (*Bluetooth*) indicator (blue) stops flashing and remains lit, the unit is connected with the device. To disconnect the unit, touch it with the smartphone again.

You can switch the sound source from the smartphone to another NFC compatible *Bluetooth* device. For details, read the Help Guide.

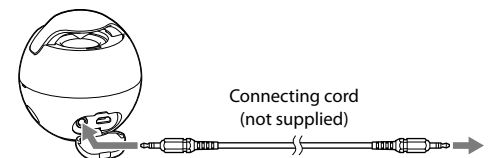
#### Hint

If you cannot connect the unit, try the following.

- Start the app on the smartphone, and move the smartphone slowly over the N mark of the unit.
- If the smartphone is in a case, remove it from the case.

#### Listening to music by connecting a connecting cord (not supplied)

You can use the unit as an ordinary wired speaker system.



If you connect a connecting cord to the AUDIO IN jack, the output from the device connected to the AUDIO IN jack has priority, and you will not hear the sound from the *Bluetooth* device.

- The *Bluetooth* word mark and logos are owned by the Bluetooth SIG, Inc. and any use of such marks by Sony Corporation is under license.
- The N Mark is a trademark or registered trademark of NFC Forum, Inc. in the United States and in other countries.
- Android is a trademark of Google Inc.
- All other trademarks and registered trademarks are trademarks or registered trademarks of their respective holders. In this manual, TM and © marks are not specified.