

SONY

Digital Still Camera

Quick Start Guide



Cyber-shot

4-474-751-12(1)

DSC-QX10/QX100

©2013 Sony Corporation
Printed in China



1 About the camera

The camera is designed to be connected to a smartphone via Wi-Fi. You can transfer images to a smartphone on the spot just after shooting.

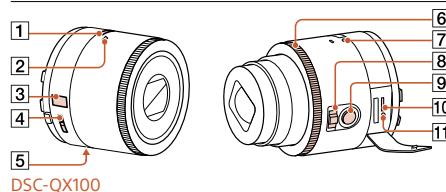
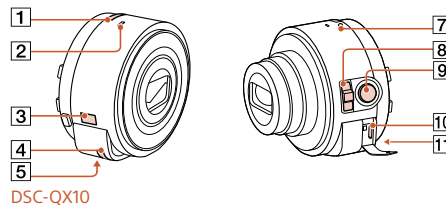
Name of main parts

- 1 Power button
- 2 Microphone
- 3 Display panel
- ⏏ : Indicates memory card not inserted
- 🔋 : Indicates remaining battery capacity
- 4 Hook for strap
- 5 Tripod socket
- 6 Control ring (DSC-QX100)

Check the supplied items

- Rechargeable battery pack NP-BN (1)
- Micro USB cable (1)
- Wrist strap (1)
- Smartphone attachment (1)
- Quick Start Guide (this manual) (1)
- Reference Guide (1)

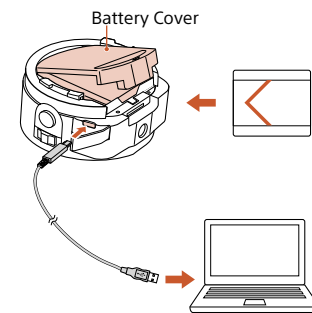
- 7 Power/Charge/Movie lamp
Green: Power ON
Orange: Charging
Red: Recording a movie
- 8 Zoom lever
- 9 Shutter button
- 10 Multi terminal
- 11 RESET button



2 Charging the battery

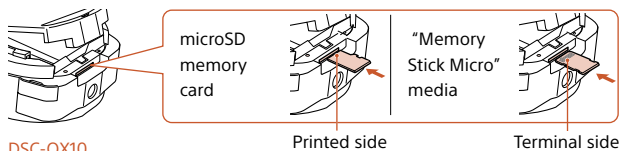
Charge the battery before using the camera. To charge, use the micro USB cable (supplied) to connect the camera to a computer.

- Turn off the power when the battery is being charged.
- If you do not have a computer, use the AC adaptor AC-UD10 or AC-UD11 (both sold separately). The AC-UD11 (sold separately) may not be available in some countries/regions.

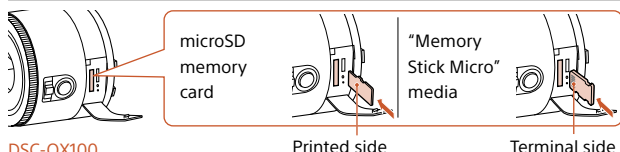


3 Inserting a memory card

Insert a microSD memory card or "Memory Stick Micro" (M2) media before shooting.



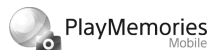
DSC-QX10



DSC-QX100

4 Installing "PlayMemories Mobile"

Install "PlayMemories Mobile" to the smartphone before using the camera. If "PlayMemories Mobile" is already installed, update it to the latest version.



For details on "PlayMemories Mobile", refer to the support website <http://www.sony.net/pmm/>



Android

Search for "PlayMemories Mobile" from Google Play and install it.



iPhone

Search for "PlayMemories Mobile" from App Store and install it.

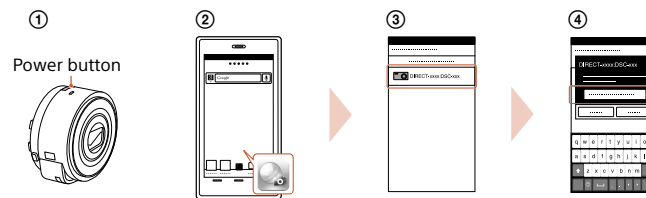


5 Connecting the camera and a smartphone via Wi-Fi

The connection method varies depending on the type of smartphone. Confirm your smartphone type and connect via Wi-Fi.

Android

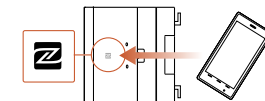
- 1 Turn on the power of the camera.
- 2 Start "PlayMemories Mobile" on the smartphone.
- 3 Select the SSID, as printed on the inside of the camera's battery cover or on the cover of this manual.
- 4 Input the password, as printed on the same label (first time only).



Continued →

Android (NFC-compatible)

- 1 Touch the **N** (N mark) of the smartphone against the N Mark of the camera.
Powered on: Continue to touch (1-2 seconds) without moving until "PlayMemories Mobile" starts up.
Powered off: Keep the camera and a smartphone touching until the lens of the camera extends.



Connecting the camera and a smartphone via Wi-Fi (continued)

iPhone

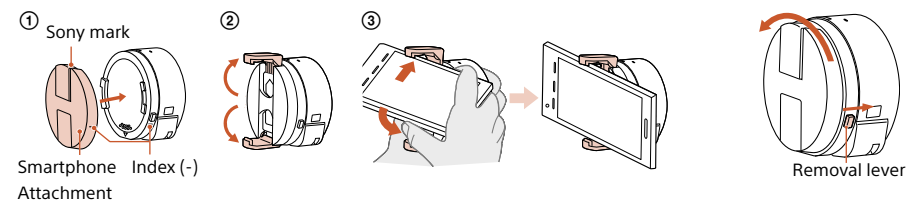
- 1 Turn on the power of the camera.
- 2 On the smartphone, select [Settings], then select [Wi-Fi].
- 3 Select the SSID, as printed on the inside of the camera's battery cover or on the cover of this manual.
- 4 Input the password, as printed on the same label (first time only).
- 5 Confirm the connection to the SSID of the camera.
- 6 Go back to the Home screen, then start "PlayMemories Mobile".



6 Attaching the camera to a smartphone

Attach a smartphone after fixing the camera to the smartphone attachment (supplied).

- 1 Fix the camera to the attachment.
 - Put the camera into the slot of the attachment, aligning the index, then rotate the attachment until it clicks.
- 2 Open the clamps of the attachment.
- 3 Extend the clamps and attach a smartphone.
 - Do not swing the camera around with a smartphone attached to it, as the smartphone may slip out of the attachment.
 - Make sure no buttons are caught when the smartphone is attached.



Removing the smartphone attachment

Slide the removal lever to the lens side and rotate the attachment.

7 Shooting images

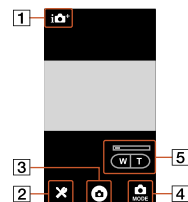
- 1 Start "PlayMemories Mobile" on the smartphone.
- 2 Shoot images with the shutter button of the camera or "PlayMemories Mobile". The shutter button of the camera is not available while shooting movies.

[2M] images are transmitted automatically to the smartphone.
[18M] images are saved into the memory card of the camera (default setting).

Shooting images (continued)

Screen of "PlayMemories Mobile"

- 1 Switching exposure modes
- 2 Settings
- 3 Shutter/movie button
- 4 Switching between still image/movie
- 5 Zoom



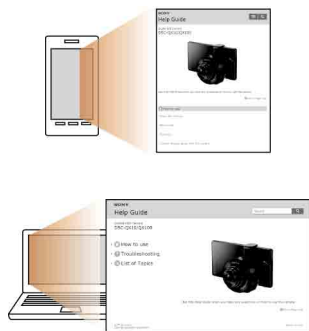
8 Terminating

- 1 End "PlayMemories Mobile" to return to the Home screen.
 - 2 Turn off the power of the camera.
 - If you turn off the power of the camera before ending "PlayMemories Mobile", an error message will be displayed. This is not a malfunction.
- * The display screen for the application is subject to change without notice by future upgrades.

Refer to the Help Guide

The Help Guide is an online manual. Refer to the Help Guide when you would like to know further details, settings and operations of "PlayMemories Mobile", and precautions.

http://rd1.sony.net/help/dsc/1310/h_zz/



Q & A

Why doesn't the camera charge?

- Turn the power off.

Why the power lamp flashing red?

- Memory card is not inserted correctly. Insert it in the correct direction.

How can I correct the date/time?

- When Wi-Fi connection between the camera and the smartphone is made, the date/time on the camera is automatically set to that of the smartphone.

How can I return to the default setting?

- Turn on the power of the camera,

then press the RESET button.

How can I change a setup of image size, etc.?

- You can make changes on the settings screen of "PlayMemories Mobile".

How can I see the number of images or information about the camera?

- Refer to the "Reference Guide" (supplied) or the "Help Guide (HTML)".

Why has the power of the camera turned on unexpectedly?

- If an NFC-enabled smartphone is

close to the camera, the power may turn on accidentally. This is not a malfunction.

Why does an image not transfer to my smartphone after shooting?

- Movies are recorded on a memory card, but are not transferred automatically.

I've forgotten the password. Where can I find out what it is?

- The password and SSID are printed on the inside of the battery cover or on the cover of this manual.